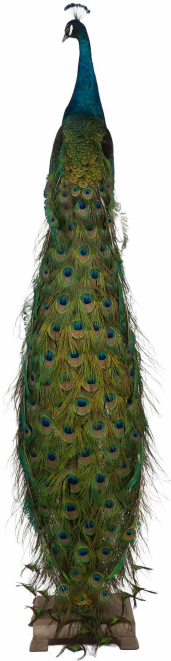


CREEL AND GOW



REGAL SPLENDOR: INDIAN BLUE PEACOCK TAXIDERMY MASTERPIECE

SKU: N/A

Categories: [Taxidermy](#), [Nature](#)

PRODUCT DESCRIPTION

This finely preserved Indian Blue Peacock (*Pavo cristatus*) taxidermy mount showcases the species' celebrated iridescent blue and green plumage in vivid detail. Native to the Indian subcontinent, the peacock is distinguished by its shimmering cobalt neck and breast and its dramatic train adorned with the iconic "eye" (ocelli) pattern, formed by elongated upper tail coverts. Mounted on an elegant oval wooden base, the piece offers versatile display options.

The detachable tail may be positioned vertically or horizontally, allowing adaptation to a mantel, wall bracket, or stand. Such mounts were especially popular in the late 19th and early 20th centuries, when exotic birds were prized for decorative interiors and natural history collections. Long associated with royalty, protection, and renewal, the peacock holds deep symbolic significance in both Eastern and Western traditions. This example combines natural beauty, cultural resonance, and refined craftsmanship, making it a distinguished addition to any curated interior or collection. Dimensions: About 6ft