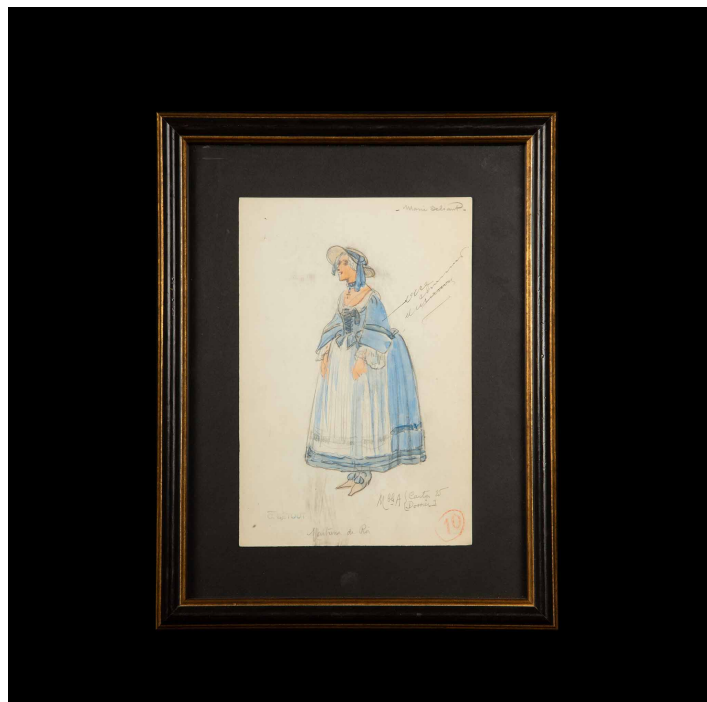


CREEL AND GOW



FRAMED ORIGINAL OPERA COSTUME DESIGN WATER COLOR, BY CHARLES BETOUT 5

SKU: N/A

Categories: [Wall Decor](#), [Decor](#)

PRODUCT DESCRIPTION

Original watercolor opera costume design by Charles Betout, the principal costume designer for the Comédie-Française in Paris from 1919 til his death in 1939. Betout was renowned for his diligent historical research, and his costumes were in high demand for operatic productions, especially for period or historic works. Each original watercolor is individually mounted in a black and gold frame. Some of Betout's costume designs are part of the collection at the Centre National du Costume de Scène, the French National Stage Costume Museum in Moulins, France. 13.25" x 10.25" x 1"