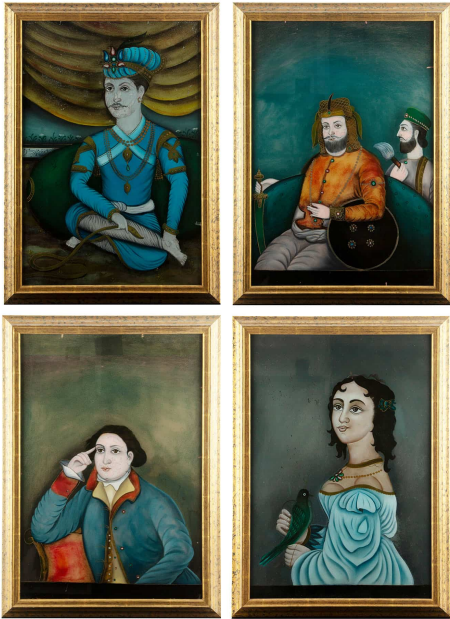


# CREEL AND GOW



## ANGLO-INDIAN SCHOOL: FOUR EGLOMISE PORTRAITS, 19TH CENTURY

\$2,000.00

---

SKU: N/A

Categories: [Wall Decor](#), [Decor](#)

## PRODUCT DESCRIPTION

## CREEL AND GOW

Set of Four Anglo-Indian Églomisé Portraits. 19th Century A finely executed group of reverse-glass paintings (églomisé), each illustrating the hybrid aesthetics of Anglo-Indian portraiture in the 19th century, blending Indian court traditions with European conventions. Portrait of a Lady with Bird A young woman in a turquoise-blue gown, her dark curling hair adorned with a green feather. Around her neck are pearls and a green pendant, while she holds a vivid green bird, a symbol of refinement and companionship. Against a shaded neutral ground, her figure is rendered with charm and decorative sophistication. Portrait of a Gentleman in Blue Turban A nobleman in an elaborate blue costume with gold embellishments, wearing a tall turban crowned with a jeweled ornament. Seated cross-legged and grasping a sword, he is set before rich drapery, symbolizing authority and courtly rank. Portrait of a Warrior in Orange Tunic A bearded man in a saffron-orange tunic, seated with a black shield and sword at his side. Behind him stands an attendant holding a fly whisk, a traditional emblem of honor and status. The strong colors and bold composition suggest martial dignity. Portrait of a European Gentleman A sitter in European dress—blue coat, red lapels, and waistcoat—shown in a pensive pose with one hand at his temple. His pale complexion and Western attire highlight the colonial presence in India, rendered here within an Indian workshop tradition. Each portrait exemplifies the Anglo-Indian taste for reverse-glass painting, a technique introduced from Europe in the 18th century and embraced in India for its luminous finish and decorative appeal. Produced for both Indian elites and colonial patrons, such works embody the fusion of Eastern and Western aesthetics distinctive of the period. All four are presented in later giltwood frames with simple molding. Dimensions (each): 21.5" height × 16" width × 1" depth