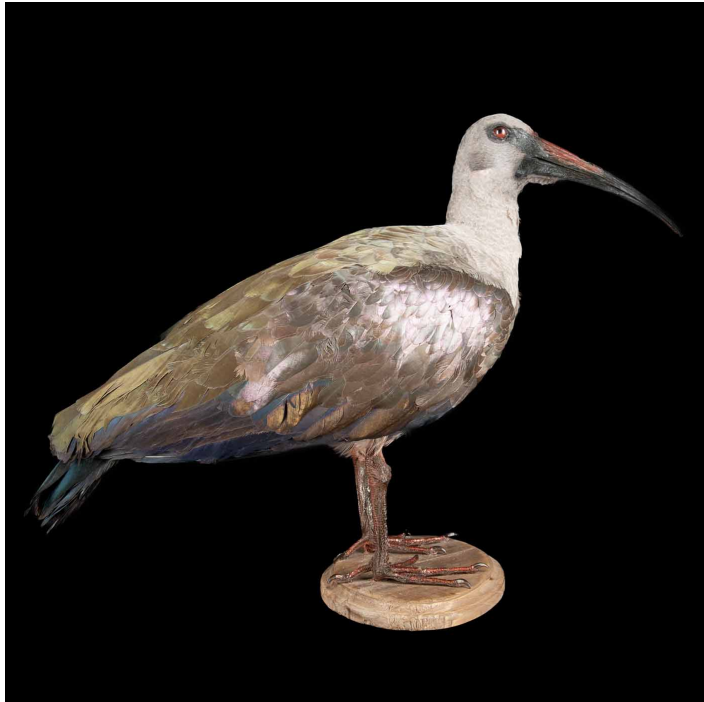


# CREEL AND GOW



## AFRICAN SACRED IBIS

---

**SKU:** N/A

**Categories:** [Taxidermy](#), [Nature](#)

## PRODUCT DESCRIPTION

The African Sacred Ibis, a striking and elegant bird, is brought to life through the art of taxidermy. With its sleek and slender body, and distinctive long beak, this majestic creature is meticulously preserved to showcase its natural beauty and grace. Its stark black feathers are set in sharp contrast to its striking white neck and head, creating a bold and eye-catching appearance that is sure to capture the attention of any onlooker. The intricate details of the feathers, beak, and eyes are carefully crafted by skilled artisans, preserving every aspect of the bird's appearance in a lifelike manner. Whether displayed as a piece of art or incorporated into a larger collection, the African Sacred Ibis is a stunning and unique addition to any space. Measures: 19" x 9" x 14"