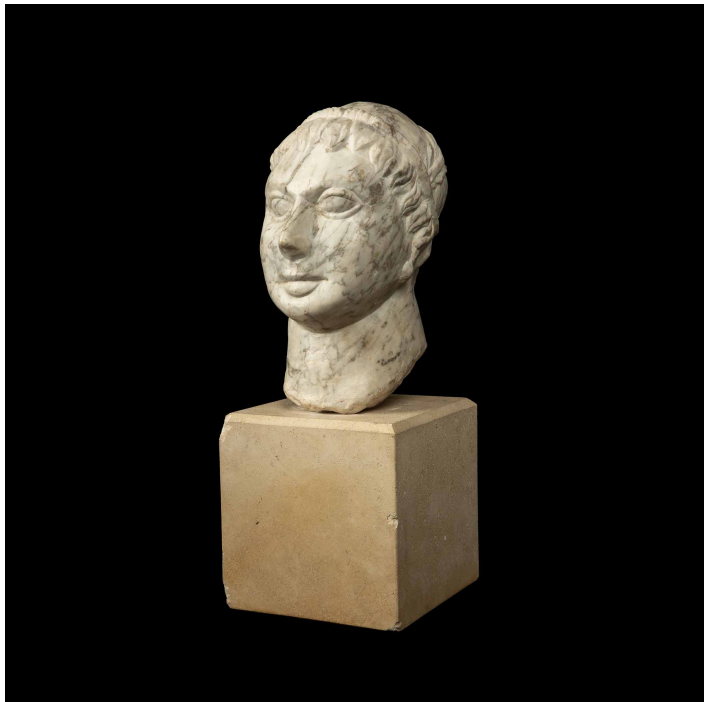


CREEL AND GOW



19TH C. CARVED HEAD OF A MAN IN THE ANTIQUE STYLE, WEARING A CROWN OF LAURELS

\$1,400.00

SKU: DEC14_CMB

Categories: [Decor](#), [Objet & Sculptures](#)

PRODUCT DESCRIPTION

This marble head showcases a man in the antique style, wearing a laurel crown. It is presented on a square stone base, emphasizing its classical elegance and symbolizing achievement. The sculpture is a beautiful reminder of the timeless appeal of classical art and the pursuit of excellence. Measures: 6" x 6" x 15"